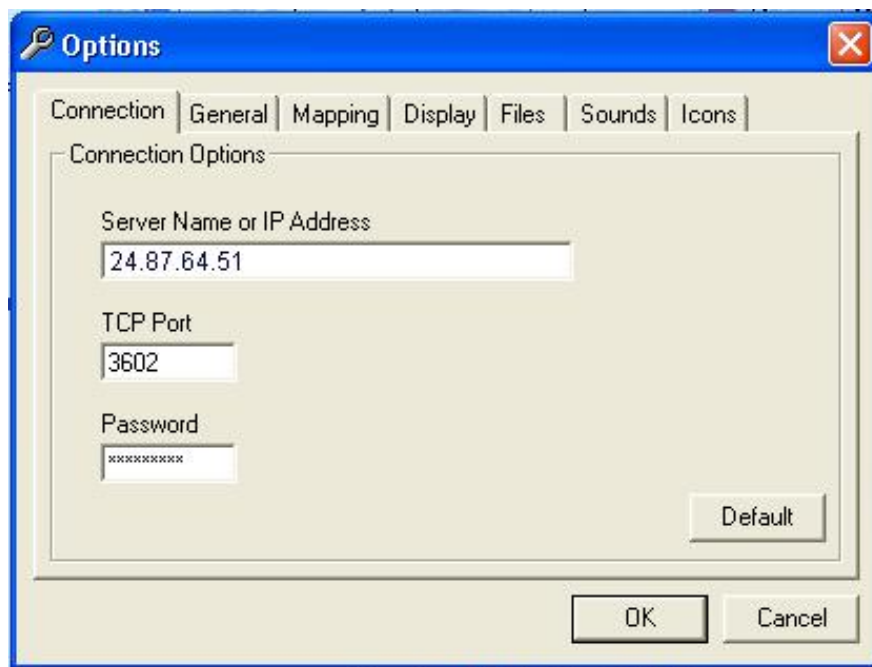


LINKING DATAHOST TO GOOGLE EARTH

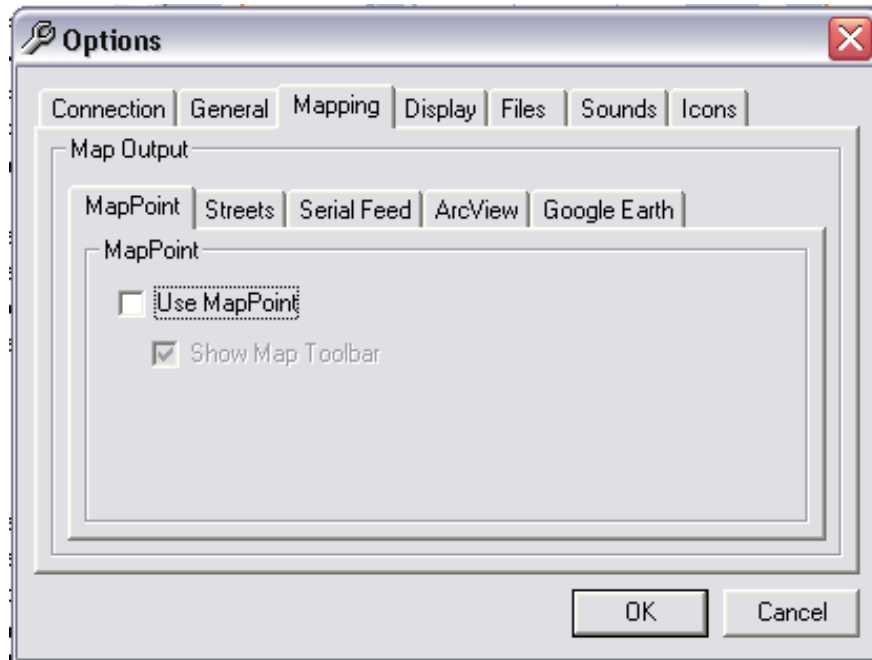
In order to use Google Earth you must have a High Speed Internet connection 24/7. You will also need to contract the appropriate level of service from Google Earth www.earth.google.com Free for many clients.

You will need to install DataNet.kml which can be found on our CD. If you are not familiar with Computer Directory structures we suggest you install DataNet.kml in your root directory, typically C:\ You can install in any directory however the path you enter later in the set-up of Earth Google must point to the selected directory. You can also find DataNet.kml in our Technical Support file downloads webpage.

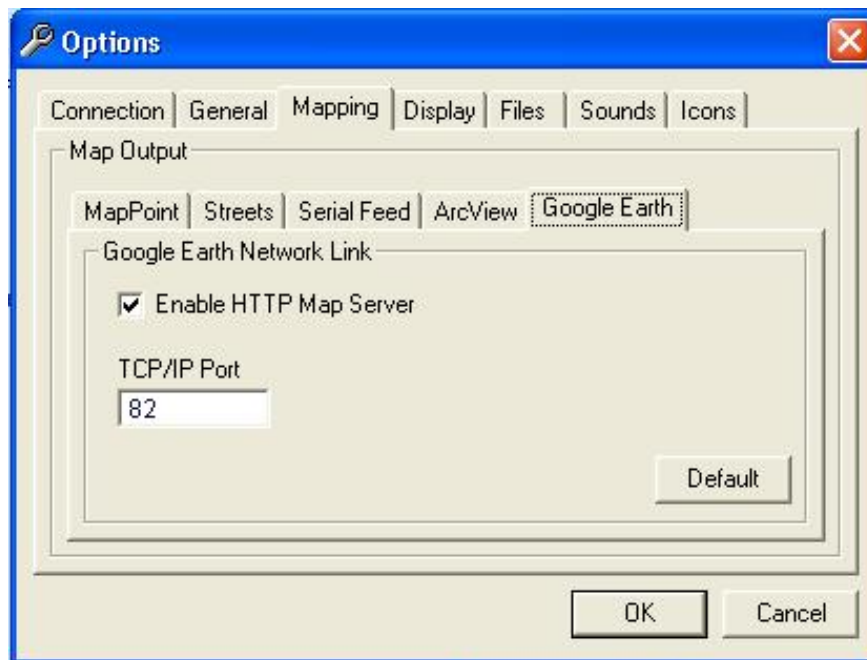
After you have installed DataHost and Google Earth, start DataHost, then select “VIEW” “OPTIONS” on the top menu bar.



You will enter the correct IP address and password for the DataGate server you wish to connect to. If you are unsure, please contact Datalink Systems by email, outlining your needs and supporting information. support@DatalinkSystemsInc.com



Now click the Mapping button and confirm there is **not** a check-mark in “Use MapPoint”. Then click on the Google Earth button.



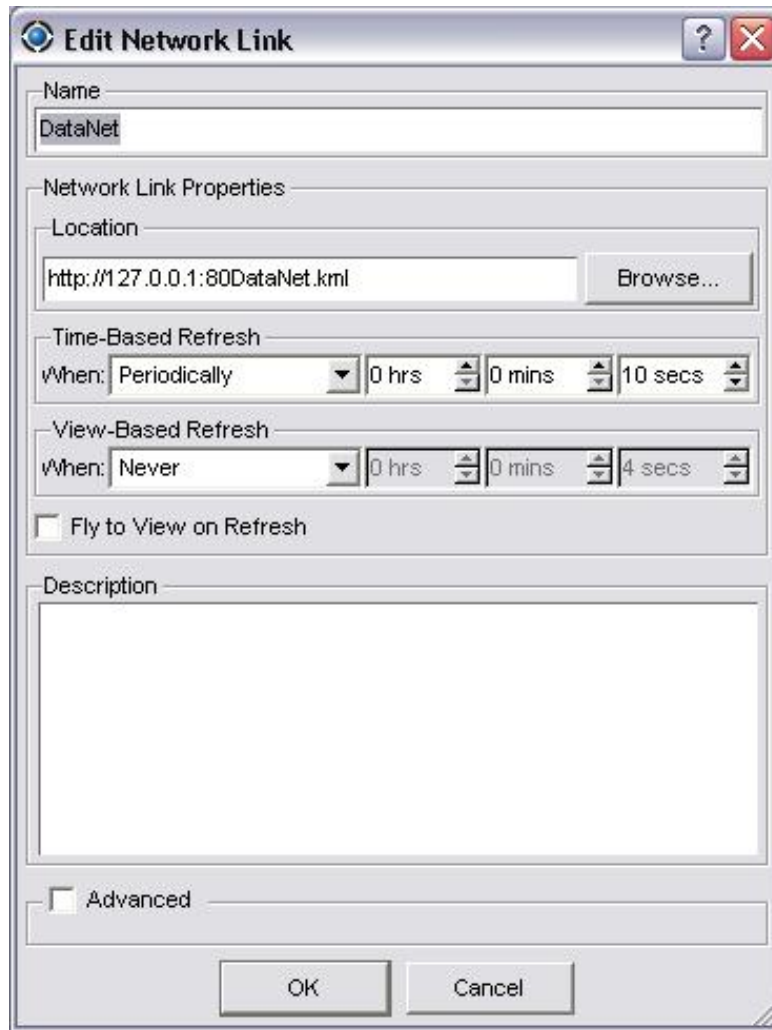
Place a check-mark in “Enable HTTP Map Server” If Port 82 is already in use, you can change the Port number i.e. 81 or 83 etc. However if you do change the Port number you must also change it in the Google Earth program set up to the same number.

Now start Google Earth and click on “ADD” and then “NETWORK LINK” on the top menu bar.

The following panel will appear. Enter DataNet in the Name box.

Now enter the directory path where DataNet.kml is located. In the sample shown the program is located in the root directory. 127.0.0.1 is used when the file is stored in the same computer as the DataHost and Earth Google installs. [HTTP://127.0.0.1:82/DataNet.kml](http://127.0.0.1:82/DataNet.kml) 82 is the port number selected.

Put a check mark in the box “refresh parameters”, then change the “time-based refresh” period to whatever is best for your use. In this case, 10 second refresh rate was selected.



You are now finished and Vehicle data should now appear on Earth Google, assuming there are vehicles transmitting to the DataGate.