

# Datalink Systems Inc

## Wireless Data Solutions

## WebGate Manual (4.6)

(Last updated: Thursday, 15 December 2011)

**Asset List (Export) (Add)**

<input checked="" type="checkbox"/>	<input type="checkbox"/>	1030 (3.0.10)
<input checked="" type="checkbox"/>	<input type="checkbox"/>	1031 (3.2.1)
<input checked="" type="checkbox"/>	<input type="checkbox"/>	1032 (3.0.11)
<input checked="" type="checkbox"/>	<input type="checkbox"/>	1033 (3.0.12)
<input checked="" type="checkbox"/>	<input type="checkbox"/>	1034 (3.0.13)
<input checked="" type="checkbox"/>	<input type="checkbox"/>	1035 (3.0.14)
<input checked="" type="checkbox"/>	<input type="checkbox"/>	1036 (3.0.15)
<input checked="" type="checkbox"/>	<input type="checkbox"/>	1038 (3.0.16)

**Asset Properties**

Name: 1031 (3.2.1)  
 Last TX: 3 months ago  
 GPS Time: Unknown  
 GPS Signal: Unknown  
 Network: Unknown  
 Latitude: 0°  
 Longitude: 0°  
 Speed: Unknown  
 Heading: Unknown  
 Cell ID: 452  
 Cell LAC: 2202  
 Cell RSSI: -109 dBm  
 Driver: Not Available

**Messages (Delete Checked)**

- Quito-1 (1.1.1)
- MT3000 PS (0.0.31)
- IM-01 (255.1.8)
- Test-Unit (0.0.1)
- Test-Unit (0.0.1)
- Test-Unit (0.0.1)

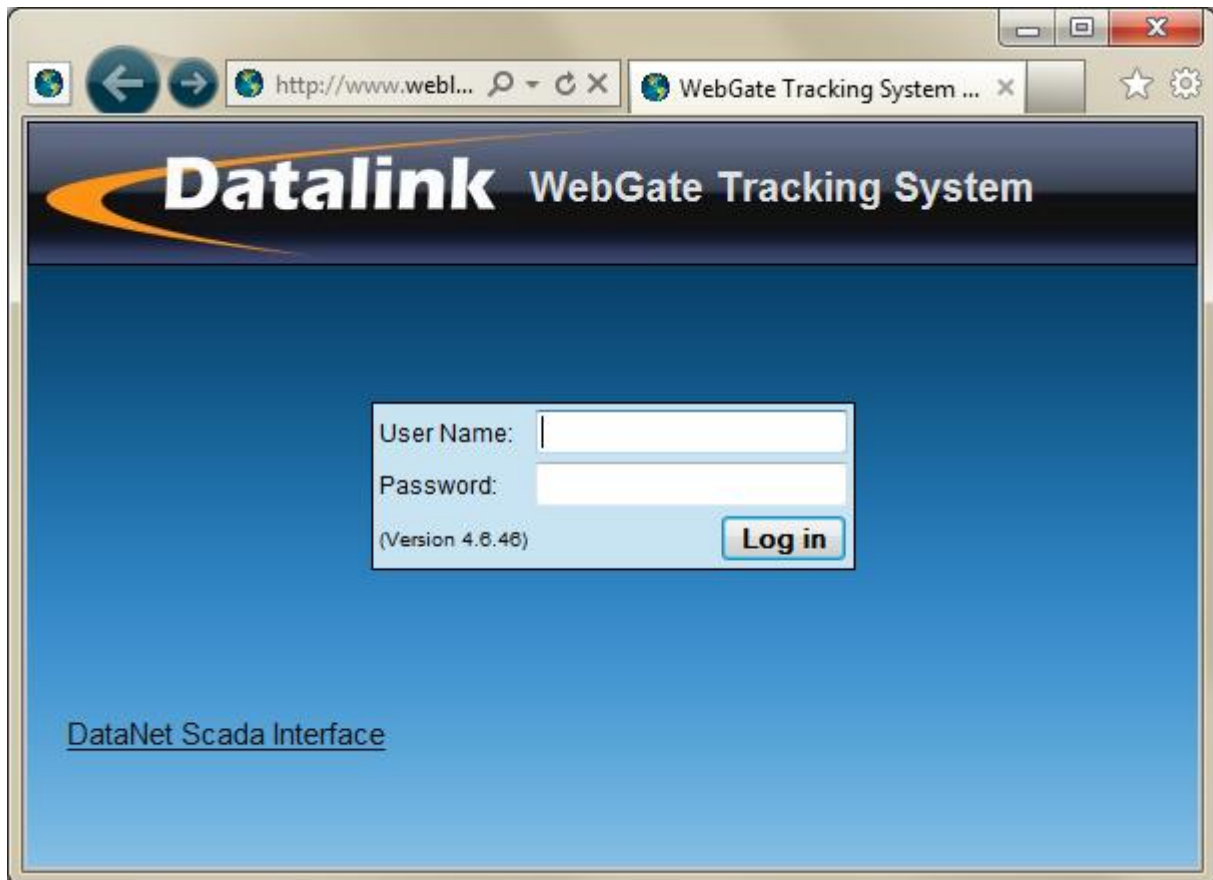
Auto Updated: November-15-11 2:05:06 PM  
 Designed by Datalink Systems, Inc. | [Test Sound](#)

# ***Contents***

1.0 WebGate Interface.....3  
2.0 Contact Information .....6

# 1.0 WebGate Interface

DataGate includes several built-in web pages that a Web Client can log in to. The first page shown when navigating to the DataGate server address is the main login page. Web Client users enter their name and password (both case sensitive) to log in.



**Figure 1 – Web Login**

Note the DataNet Scada Interface link on the main page. This will appear if the Scada web link is enabled, and allows Terminal Clients to set their dynamic IP address.

When viewing this main page on a Blackberry device, a link will be shown for downloading the Mobitrac application. Mobitrac allows users to view asset locations directly on their Blackberry devices, and is also available for iPhone/iPad devices.

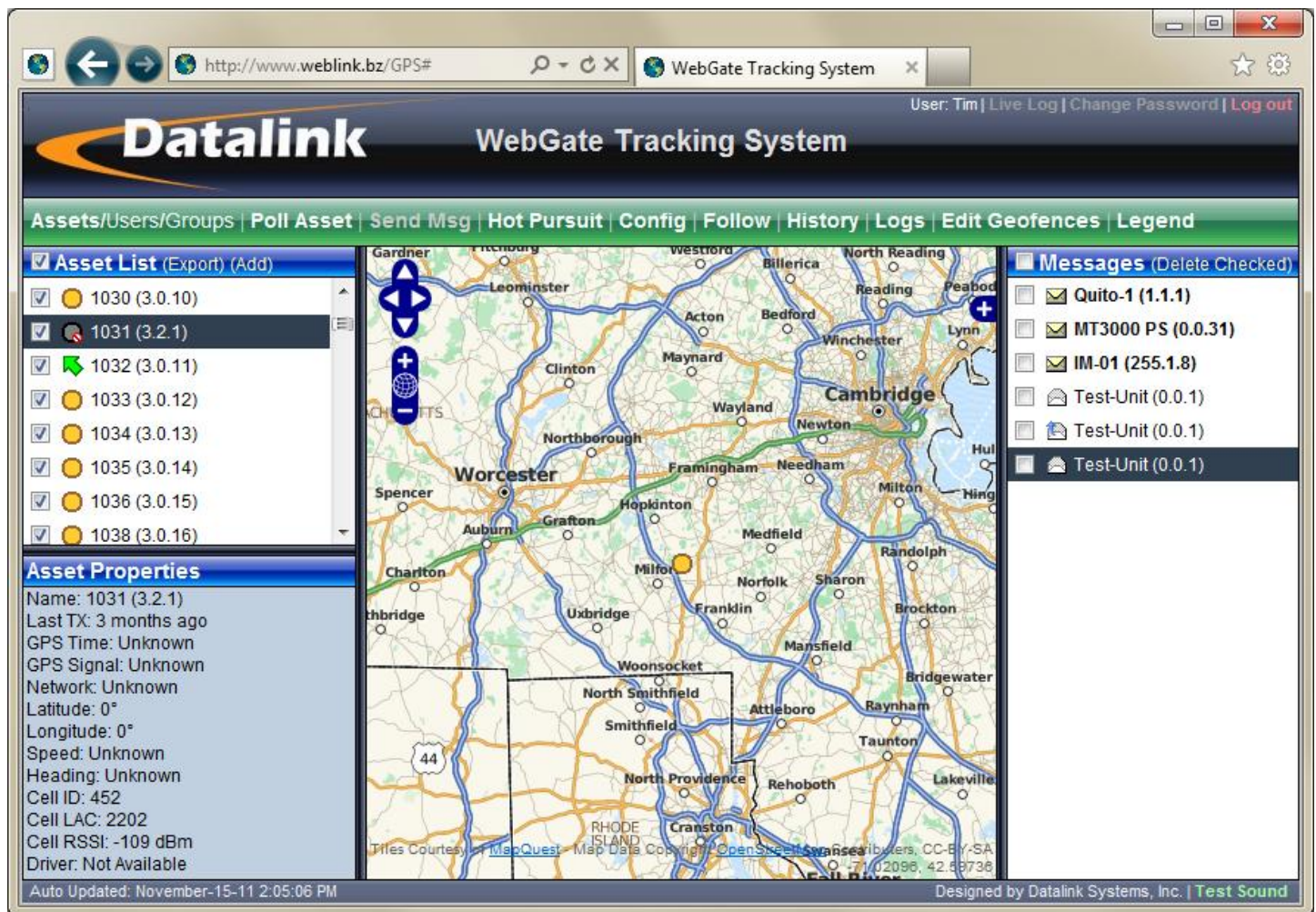


Figure 2 – Web Client Page

Figure 2 shows the main mapping page. This page uses AJAX components to maintain a live connection with the DataGate. Asset positions and messages are updated in real-time.

- User Info:** The top-right corner shows the currently logged in user, with a link to log out. This link will change to “Log In” if the current user gets logged out automatically.
- Live Log:** A Live Log link is shown for Admin users with access to the “All” group. This log is a mirror of the log shown on the main DataGate window.
- Change Password:** If HTTPS is enabled, users can remotely change their passwords.
- Assets/Users/Groups:** Admin and supervisor users will have access to asset and user lists. Admin users from the “All” group will also have remote control of group lists. Click on the link to switch between asset, user and group lists.
- Poll Asset:** Transmit request for current position to asset (not shown if user has read only access).
- Send Msg:** Opens a send message window to allow sending messages to assets that support text messaging.
- Hot Pursuit:** Automatically poll the asset every 10 seconds for 5 minutes.
- Config:** This link opens a window showing details about the currently selected asset, user, or group. Depending on the user’s permissions, this screen will

also allow features such as asset name changing, remote configuration, and asset/user assignment.

- Follow:** Automatically move the map to follow the selected asset as it moves towards edge of current view.
- History:** Allows user to request history for a selected asset and time period. History requests can also be limited to the current map area. This option is only available when using a database.
- Logs:** Admin users can open various DataGate log files.
- Geofences:** Users can create or edit geofence areas by drawing shapes on the map. Alerts will be generated when selected assets enter or exit these areas.
- Legend:** Show or hide the icon legend. This legend can be moved anywhere on the screen.
- Asset/User/Group List:** Lists the assets/users/groups accessible by this user. The Asset List has checkboxes to show or hide individual assets on the map. The Export button generates a CSV listing of the list. Click on an asset to highlight it on the map, or double-click to centre the asset on the map. Double-click on users or groups to open the Config window. Admin users can also add new assets/users/groups using the Add button.
- Properties:** Shows detailed properties about the current asset/user/group. Certain maps allow address lookups for assets, and an address field will be shown.
- Messages:** If a database is being used, user alerts will be shown on the map screen. The Messages bar will flash yellow when new low-priority messages have been received, or red if there are new alerts. This requires the "Show Messages Panel" option to be checked on the User Properties screen. Double-click on a message to open its contents. Use the checkboxes to select messages, and the "Delete Checked" button to delete them.
- Test Sound:** Plays a test sound to confirm playback is working. An alarm sound will also be played when new high priority alerts occur.

## ***2.0 Contact Information***

For further support, email: [support@datalinksystemsinc.com](mailto:support@datalinksystemsinc.com)